



MA Energy Code Update and The Top 10 Things You Really Need To Know... 2015 IECC and 9th Edition: Commercial

Massachusetts Codes and Standards
Compliance Support Program



We Speak  Building



What Is Mass Save®?



- Mass Save® is an initiative sponsored by Massachusetts' gas and electric utilities and energy efficiency service providers, including
 - The Berkshire Gas Company
 - Cape Light Compact
 - Columbia Gas of Massachusetts
 - Eversource Energy
 - Liberty Utilities
 - National Grid
 - Unitil
- The Sponsors of Mass Save work closely with the Massachusetts Department of Energy Resources to provide a wide range of services, incentives, trainings, and information promoting energy efficiency that help residents and businesses manage energy use and related costs.



Today...



- **Major Changes between the 8th and 9th Edition – Commercial Provisions**
- **2015 IECC: Key Requirements + “Hot Topics”!**

But First... Documentation!



- **Complete Drawings with Full Energy Code compliance details and specifications**
- One Sheet?
 - Attic, Walls, Foundation Insulation
 - Window U-Value & Infiltration Specs
 - Air & Vapor Retarder Specs/Details
 - HVAC, SHW, Duct Insulation and Sealing Specs
 - Mechanical System Design Criteria inc. SIZING
 - HVAC Controls Specs
 - Mechanical Ventilation System Specs
 - Duct Sealing & Heating and Piping Insulation Specs
 - Elec Power & Lighting System Specs
- Commissioning Plan
- Construction/Specification Manual
- Compliance Path Documentation



Documentation...cont'd



- **Energy Code Compliance Path Documentation:**
 - COMcheck REQUIRED for ALL PERMIT submittals!
 - Helps Assure Mandatory Requirements
 - Print out Checklists, Certificates
 - ASHRAE Compliance Path: The requirements of ASHRAE 90.1-2013
 - Prescriptive Compliance Path: The requirements of Sections C402 through C405
 - Performance Compliance Path: The requirements of Sections C402.5, C403.2, C404, C405.2, C405.3, C405.5, C405.6, and C407

#1 - Effective Dates



- DPL Adopts 9th Edition – October 9, 2017 **NEW!**
- Effective Date October 20, 2017
- Interim Period – October 20 through January 1, 2018
 - May Comply with Either 8th or 9th Edition Codes
- **January 1, 2018 – 9th Edition in Full Force**
 - **ALL Enhancements Effective**

#2 – COMcheck Required



NEW!

- **107.2.6 COMcheck Submittal Required**
- ALL Permits Shall Include Completed COMcheck
 - Envelope, Lighting and Mechanical Compliance Certificates
 - Plan Review Inspection Checklist for:
 - Compliance with the Energy Provisions of 780 CMR 13.00: Energy Efficiency
 - Advantage: Documentation for Code Compliance, Inspection
 - Lack of documentation ALWAYS biggest challenge for code enforcement

#3 – Solar Ready

C402.3



NEW!

- **New Low-rise Commercial Buildings and Additions**
 - Less than 4 stories above grade (i.e. 3 stories or less)
 - Not < 2400 ft² roof area
 - Either flat or oriented between 110 degrees and 270 degrees of true north
 - Must Comply with Solar-ready Zone Requirements
 - Interconnection pathway
 - Construction documents specification
 - Obstruction-free
 - Roof load documentation
 - Electrical service reserved space
- **Some exceptions**

#4 - Air Barriers and Construction

C402.5.1 and C402.5.1.1



- Continuous air barrier for all assemblies
- Across joints
- Joints & seams to be sealed
- Penetrations & joints sealed and compatible with material and location
- Recessed-lighting: compliant fixtures
- Placement: inside, outside, or within assemblies composing envelope
- **ABAA Program, or Auditor – Third Party?**

#4 Cont'd- Air Barrier - Examples



Liquid-applied



Photo Credits: Air Barrier Association of America

#4 Cont'd- Air Barrier – Examples

Spray Foam – High Density

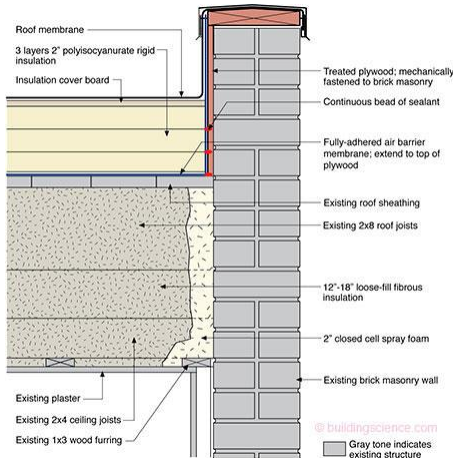


Photo Credits: Air Barrier Association of America

#4 Cont'd - Air Barrier Testing Alternative

C402.5

- Thermal envelope must comply with:
 - Materials OR
 - Assembly provision OR
 - Tested in Accordance with ASTM E779 @0.3 in. water gauge



Building thermal envelope with a tested air leakage rate of ≤ 0.40 cfm/ft² complies with air leakage requirements

Photo Credits: Michael C. DeWein

#5 - Economizer Fault Detection and Diagnostics

C403.2.4.7



Air-cooled unitary direct-expansion units and VRF units equipped with an economizer must include a fault detection and diagnostics (FDD) system:

- Outside air, supply air and return air temperature sensors must be permanently installed
- Temperature sensors must have an accuracy of $\pm 2^\circ$ F over the range of 40° to 80° F
- Refrigerant pressure sensors, where used, must have an accuracy of $\pm 3\%$ of full scale
- Unit controller must be capable of providing system status, manually initiating each operating mode and reporting faults to a fault management application
- FDD (Economizer Fault Detection and Diagnostics) system must be capable of detecting air temperature sensor fault, economizer faults, damper not modulating and excess outdoor air
- **WHY? ASHRAE Determined that 75% Economizers Nationally are Not Working !**

#6 - Mechanical Systems Commissioning and Completion

C403.2.11 Mandatory



• HVAC Commissioning

- Applies to
 - $\geq 480,000$ BTU/hr. cooling OR
 - $\geq 600,000$ BTU/hr. heating
- Requires
 - Commissioning plan
 - Systems adjusting/balancing
 - Functional testing: equipment, controls, economizers
 - Preliminary commissioning report
 - Construction documents & O&M manuals
 - Final commissioning report and air balance report

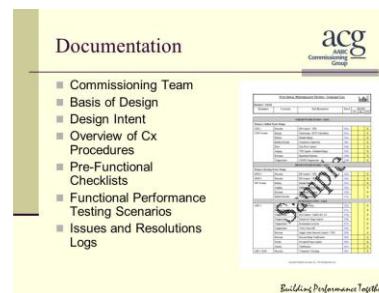


Photo Credits: Michael C. DeWein

#7 – Lighting and Controls Commissioning

C408.3 Mandatory



- Applies to buildings with automatic lighting systems
 - Functional testing
- Requires:
 - Commissioning plan
 - Occupant sensors
 - Time switch controls
 - Daylight responsive controls
 - Documentation
 - Final commissioning report and certification

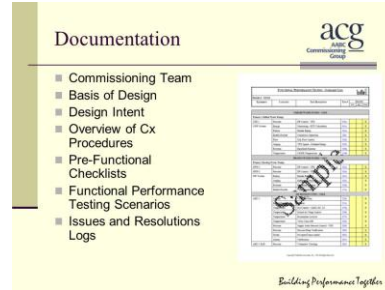


Photo Credits: Michael C. DeWein

#8 – Setback Controls - Hot Water Boilers



- Hot water boilers MUST have setback controls
- Provide setback to accommodate outside conditions

tekmar - Data Brochure D 264
Boiler Control 264 12091

The tekmar Boiler Control 264 can control the supply water temperature from up to 4 on/off stages based on outdoor temperature, control for Domestic Hot Water (DHW) generation, or a setpoint requirement. A large ease-to-read display provides current system temperatures and operating status. The control has subroutines for a primary pump and either a combination air damper or alarm. Based on the mode of operation selected, the control can operate different combinations of boiler stages and boiler pumps.

- Additional functions include:
- Installer and Advanced access levels
 - Primary pump output
 - Individual boiler pump outputs (in applicable modes)
 - Pump sequencing
 - Pump sequencing (primary and boiler)
 - 0 - 15 V (dc) input signal
 - Boiler demand for space heating loads
 - DHW demand for DHW loads
 - Setpoint demand for setpoint loads
 - Test sequence to ensure proper component operation
 - CxK Cx-10 certified
 - Setback input for energy savings

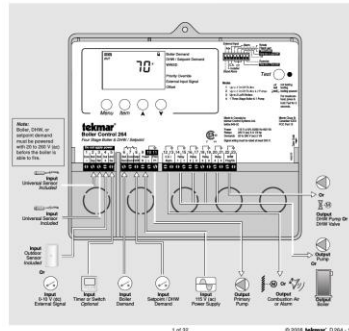


Photo Credits: Michael C. DeWein

#9 - Additional Efficiency Requirements

TWO additional efficiency features to comply with the IECC

More efficient HVAC
 Reduced lighting power density
 Enhanced lighting controls
 On-site renewable energy
 Dedicated outdoor air system
 High-efficiency SWH



Photo Credits: Michael C. DeWein

Additional Efficiency Requirements - HVAC

- HVAC
 - Efficiencies based on Consortium for Energy Efficiency (CEE)
 - Option not available to all HVAC system types
 - Ruled “legal” by AHRI



High Efficiency HVAC

Photo Credits: Michael C. DeWein

Remember - Existing Buildings Covered!

- Substantial renovations impacting systems
- Additions
- Alterations
- Repairs
- *Make Sure Your Renovation Work COMPLIES!*

QUESTIONS?



Energy Code Support



Questions about the energy code?

Energy Code Support Hotline:

855-757-9717

Energy Code Support Email:

energycodesma@psdconsulting.com

New Buildings and Major Renovations – Commercial



- **Incentives for efficiency levels beyond code and/or standard industry baselines:**
 - **Whole building incentives**
 - **System incentives including**
 - Air Compressors
 - Chillers
 - Lighting and Lighting Controls
 - Gas-Fired Heating Equipment
 - Variable Speed Drives
 - Custom Measures
 - And more

We also offer incentives and rebates for existing buildings.
Please visit www.MassSave.com for the details



We Speak Building



Energy Code Technical Support Program

Thanks!

Massachusetts Energy Code Technical Support Program



BLACKSTONE
GAS COMPANY



Columbia Gas
of Massachusetts
A Midcon Company

EVERSOURCE

Liberty Utilities

nationalgrid
HERE WITH YOU. HERE FOR YOU.

